

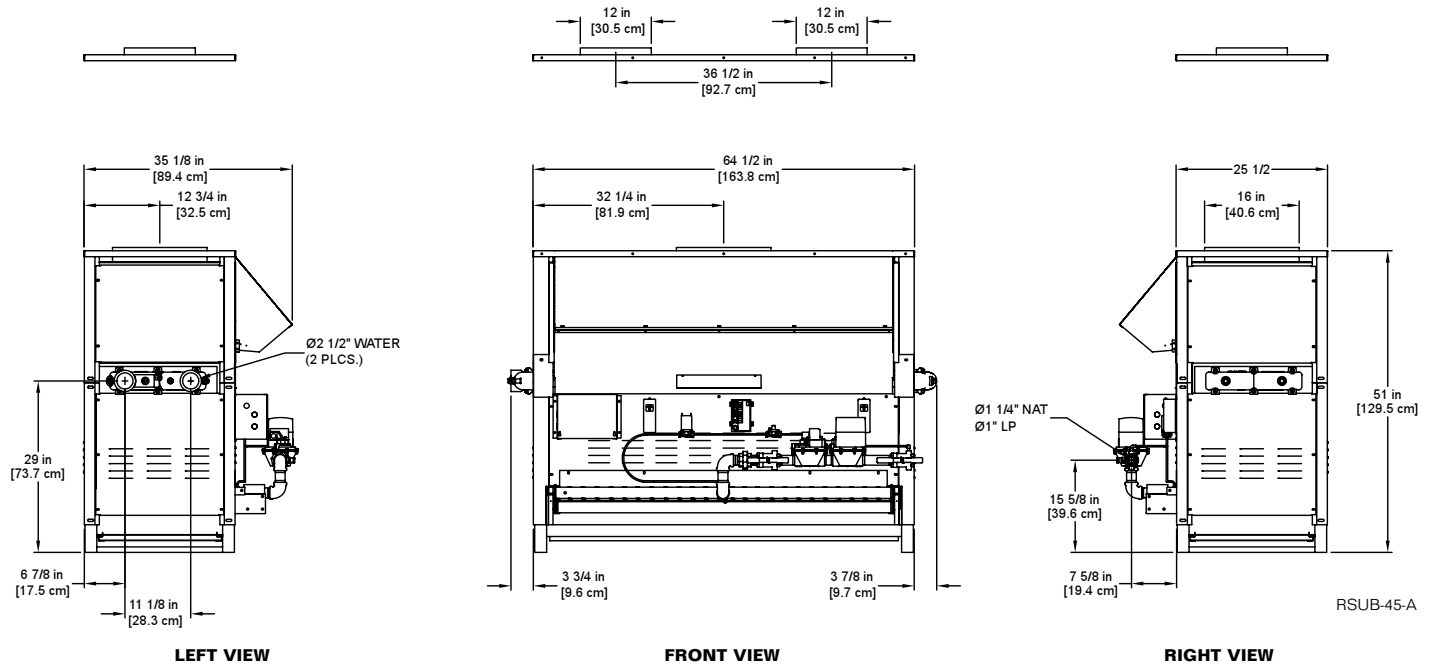
**CODE OPTIONS**

<b>CSD-1</b>	UTC 1003-616A Ignition Control UTC Lockout/Reset Control Manual Reset LWCO
<b>IRI</b>	IRI requirements as listed in IM.4.1.1 (two motorized safety valves with N.O.V.V. no longer applies to listed atmospheric gas boilers). The addition of CSD-1 option satisfies IRI requirement for the 8900 Series.
<b>Kentucky (Water Htr Only)</b>	200° F Maximum Operating Control and High Limit

**NOTE:** Dimensions are approximate and should not be used to "rough-in" equipment.

\* Add circulator amps.

\*\*For incoming gas pressures lower than 6" W.C. natural or 11" W.C. propane, consult factory.



**A.G.A. CERTIFIED RATINGS & CAPACITIES**

<b>Fuel Type</b>	Natural/Propane Gas	<b>Boiler FLA</b>	1*
<b>Input BTU/hr.</b>	1,260,000 / 369 kW	<b>Min. Gas Pressure Required</b>	6" W.C.**
<b>Output BTU/hr.</b>	1,020,600 / 299 kW	<b>Max. Gas Pressure Allowed</b>	14" W.C.
<b>Electrical Requirements</b>	120VAC / 1 ph / 60 hz	<b>Operating Weight</b>	889 lbs. / 404 kg.

**TEMPERATURE RISE / PRESSURE DROP**

25° F / 13.9° C				30° F / 16.7° C				35° F / 19.4° C			
Flow Rate		Pressure Drop		Flow Rate		Pressure Drop		Flow Rate		Pressure Drop	
GPM	L/s	Ft	kPa	GPM	L/s	Ft	kPa	GPM	L/s	Ft	kPa
81.6	5.2	4.8	14.2	68.0	4.3	3.4	10.1	58.3	3.7	2.6	7.6

**BOILER TRIM & CONTROLS**

<b>Main Gas Valve</b>	Honeywell V8944B 1 1/4"	<b>High Limit (HB/HW)</b>	Honeywell L4008E
<b>Firing Valve</b>	Honeywell B200T1041 1 1/4"	<b>Ignition Control</b>	Honeywell S8610M
<b>Safety Valve</b>	Honeywell V88A 1 1/4"	<b>Solenoid Valve w/Reg.</b>	CV100
<b>Operating Control (HB)</b>	Honeywell L4008A - On/Off	<b>Relief Valve - HW</b>	3/4" x 3/4" set @ 125 psi
<b>Operating Control (HW)</b>	Honeywell L6008A - On/Off	<b>Relief Valve - HB</b>	3/4" x 3/4" set @ 50 psi
<b>Operating Control (HB/HW)</b>	Honeywell L6008G - 2 Stage	<b>Flow Switch</b>	ITT FS4-3
<b>Operating Control (HB/HW)</b>	Honeywell T991E - Mod.		
<b>Operating Control (HB/HW)</b>	Tekmar BTC-4PA-4 Stg.		

**RECOVERY CAPACITY**

40° F	22° C	60° F	33° C	80° F	44° C	100° F	56° C	120° F	67° C	140° F	78° C
3063	11595	2042	7730	1532	5797	1225	4638	1021	3865	875	3313

**A.S.M.E.**

<b>ASME Sect IV Htg Surface</b>	100.85 Sq. Ft. / 9.37 Sq. M.	<b>Design Data</b>	Max. 160 psig & 250° F
---------------------------------	------------------------------	--------------------	------------------------

<b>REP FIRM</b>	_____	<h1 style="margin: 0;">8900 1260</h1> <p style="margin: 0;"><b>Category I Appliance</b></p> <p style="margin: 0;">Must be vented into a negative pressure vent system.</p>
<b>SUBMITTED BY</b>	_____	
<b>JOB NAME</b>	_____	
<b>ARCHITECT</b>	_____	
<b>ENGINEER</b>	_____	
<b>CONTRACTOR</b>	_____	<p>® A Division of Mestek, Inc. Westfield, MA 01085 (413) 568-9571</p>
<b>DATE</b>	_____	